



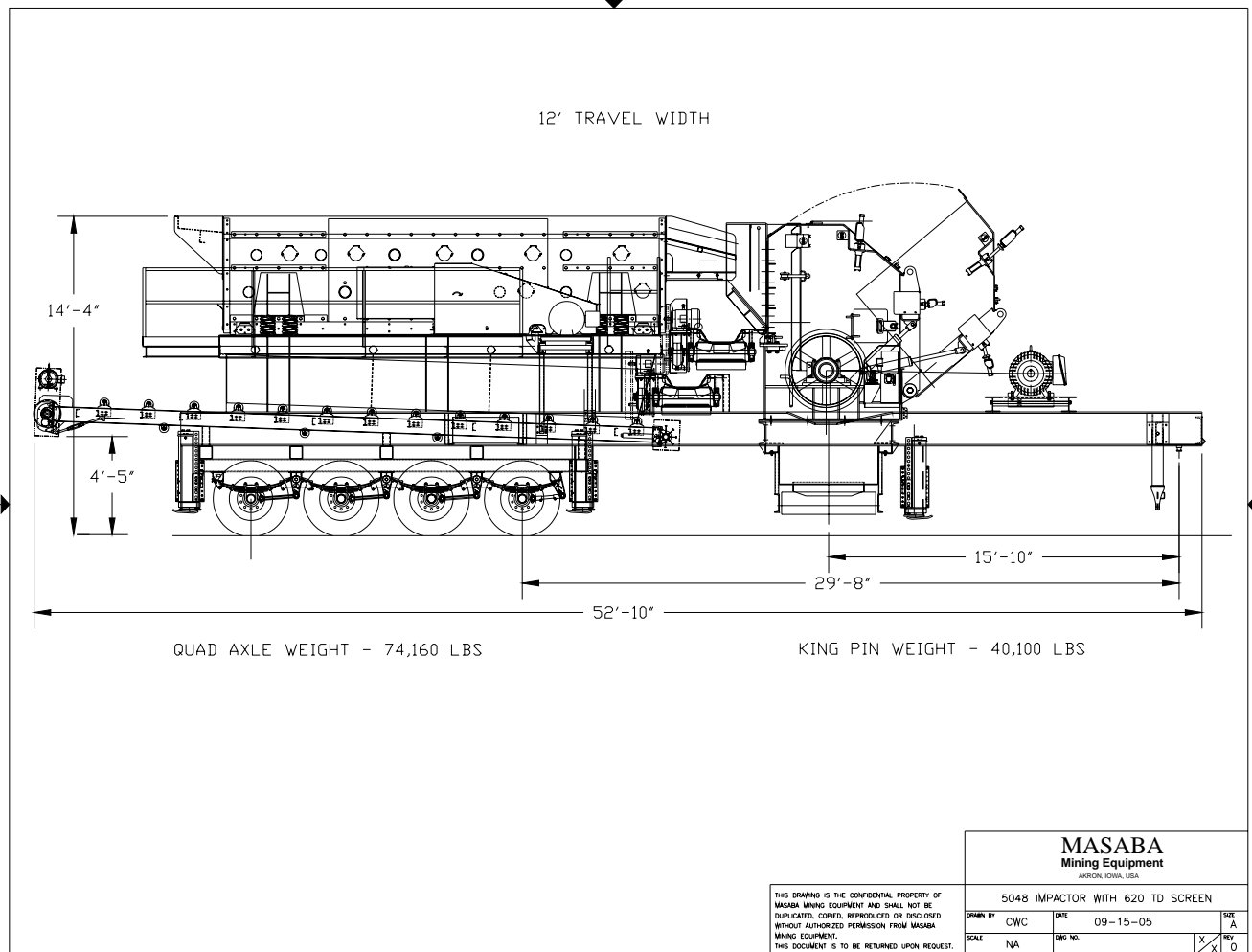
Cedarapids 50x48 H.S.I., with 6x20 3-deck Screen, Plant by Masaba

Description:

- Cedarapids 50x48 Horizontal Shaft Impactor, SN=52819
- Cedarapids TSH6203 Screen, 6'x20' – 3 decks, SN=53177
- Masaba Plant, SN=
 - Quad axle chassis constructed of heavy duty wide flange beam
 - Crusher feed hood from 3/4" mild steel with AR liners
 - Chain curtain in crusher feed hood to eliminate material fly back
 - Heavy duty 25,000lb Reyco 21B suspension w/ (16) 11:00 x 22.5 radial tires
 - Brake Package – air brakes, emergency valve and plumbing
 - Light Package – brake and directional signals
 - Two fold down legs with screw jacks
 - Six Masaba Brute run on jacks
 - 8 Hp Honda Gas/hydraulic power unit for jacks, crusher hydraulics and under crusher conveyor
 - WEG 40 hp 1200 rpm screen drive motor
 - (1) WEG 250 hp 1800 rpm crusher drive motor
 - Qty (2) 24" reversible cross conveyors w/ Dodge #3, Cema B idlers and 3 ply belt
 - 48" Under screen conveyor w/ rear discharge w/ Dodge #4, Cema B idlers and 2 ply belt
 - 48" Under crusher side delivery conveyor w/ Dodge #4, four Cema B impact idlers, 3 ply belt and power hydraulic fold
 - Diamond plated catwalk, access ladder and railing between crusher & 250 hp motor for drive maintenance

- Diamond plated catwalk, access ladder and railing on three sides of screen
- Complete Square D switchgear with reduced voltage starter for 250 hp crusher drive motor, start stops for screen motor and plant mounted conveyors, two extra #2 starters included for off plant conveyors, amp gauge in panel door for 250 hp motor, disconnect, e-stop, breakers not fuses and seven 100' cable leads
- Guarding – Appropriate guarding supplied. We do not warrant that our guards will meet all local codes. It is the responsibility of the end user to have them checked by a local inspector.
- One coat primer and one coat high solids machinery enamel in customer specified color
- Owners Manual for parts and maintenance





MASABA Mining Equipment <small>AMRON, SOUTH, USA</small>						
5048 IMPACTOR WITH 620 TD SCREEN						
<small>DRAWN BY</small>	CWC	<small>DATE</small>	09-15-05			
<small>SCALE</small>	NA	<small>DWG NO.</small>	<table border="1" style="border-collapse: collapse;"> <tr> <td style="width: 20px; text-align: center;">X</td> <td style="width: 20px; text-align: center;">X</td> <td style="width: 20px; text-align: center;">0</td> </tr> </table>	X	X	0
X	X	0				

THIS DRAWING IS THE CONFIDENTIAL PROPERTY OF MASABA MINING EQUIPMENT AND SHALL NOT BE DUPLICATED, COPIED, REPRODUCED OR DISCLOSED WITHOUT AUTHORIZED PERMISSION FROM MASABA MINING EQUIPMENT. THIS DOCUMENT IS TO BE RETURNED UPON REQUEST.